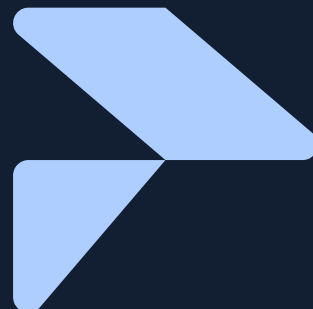




Our e-POD *Modular Solutions*

*Scalability with
Resilience & Speed.*
Ready to Deploy.



Global *experts*. Local *precision*.

Leading to over 10GW of Data Centre power installed around the globe

Rehiko specialise in delivering robust critical power solutions for data centres across the globe, ensuring uninterrupted performance and resilience in high-demand environments.

Our services cover the full lifecycle of critical power infrastructure – from design and installation to preventative maintenance and emergency response. With deep expertise in UPS systems, generators, POD's, switchgear, and power distribution, supported by a global network of engineers, manufacturing and distribution centres, Rehiko guarantees rapid support and tailored solutions to meet the stringent uptime requirements of modern data centres.



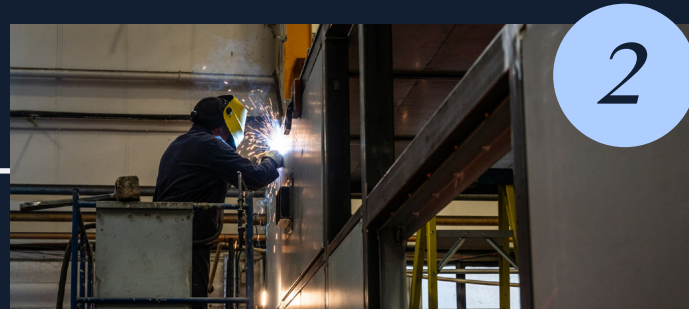
24/7 Support Strategically Located Technicians Optimised Spare Parts Availability Tailored Service Solutions

From end-to-end. One partner. One promise.



We Design

Working with our highly talented and proactive in-house M&E design team to define a solution to your exact site requirements, Rehlko are able to offer complete flexibility of design, with package ratings from 500kVA to 4.5MVA. From package rating, space available on site through to the inclusion of client preferred equipment vendors, all can be fully supported by our highly adaptable design team.



We Build

With over 100,000sqm of production facility available, Rehlko maintain high levels of control over the full supply chain. With a dedicated e-POD production facility in the UK, sat alongside an accompanying fabrication facility, we can ensure our customers receive high levels of confidence, transparency and trust.



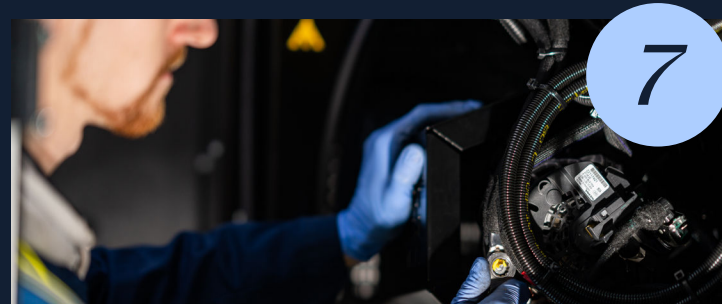
We Test

All equipment is fully tested prior to leaving our e-POD production facility in the UK. Each system is put through a rigorous pre-commissioning and FAT testing schedule (up to level 4) to ensure optimum performance. Not only this, our testing schedule can be fully tailored to meet specific requirements of the client.



We Deliver

Utilising our own in-house logistical fleet, we will deliver your equipment to pre-defined schedules, advising on site preparedness and keeping you informed, every step of the way.



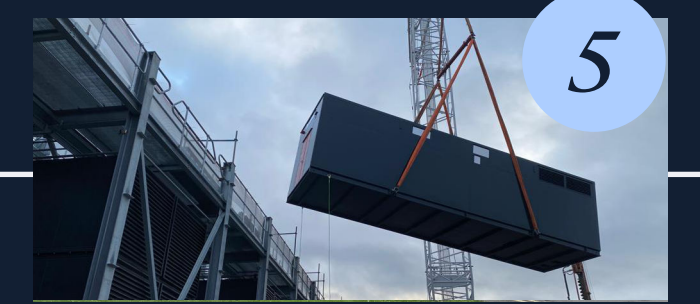
We Maintain

With over 200 field engineers across Europe, Rehlko is ideally positioned to deliver a full preventative maintenance programme, backed by a guaranteed four-hour emergency response. Our e-POD packages include a wide range of electrical equipment from trusted specialist partners, who also provide expert maintenance and emergency support.



We Commission

Our Commissioning team will work closely with the client and nominated specialists to agree and finalise the commissioning plan and program. Once the M&E installations have been completed, the Commissioning team set to work to commission and test all aspects of the installation. This culminates in a full site acceptance test (SAT) including rigorous load testing.



We Install

On project award, Rehlko will appoint a dedicated team to coordinate with all stakeholders through to completion. Once equipment is delivered to site, we will offload, position and configure all module interconnections (e.g. cable or busbar). The fire alarm and suppression system, designed to match the site-wide system, is then integrated with BMS outstations and the security system.



e-POD Product *Overview*

Scalability with Resilience & Speed. Ready to Deploy.

Rehiko have designed the e-POD, a site bespoke, modular, enclosed full plug and play critical power solution. The e-POD provides both the client and designer a wide range of choices in terms of power rating, capacity and product selection.

The e-POD solution can provide any or all of the following elements:

- Mains transformer 11kV/400V and RMU
- MV and LV switchgear
- Generator
- Fuel storage system
- Flue system including SCR
- UPS and battery system
- Busbar and cabling
- Cooling
- Lighting, fire detection and suppression
- Gantry access systems & steelwork
- Full factory testing
- Comprehensive all product service and maintenance support

CUSTOMISE YOUR PACKAGE

With package ratings available from 500kVA through to 4,500kVA, our highly reactive electrical and mechanical in-house design team provide customers with the flexibility to select from three different e-POD products, giving your team the ability to select a product & solution which matches your exact needs and requirements.

From package rating, space available on site through to the inclusion of client preferred equipment vendors, all can be fully supported by our highly adaptable supply chain.

Having our own e-POD production and development facility also affords Rehiko huge flexibility, particularly in formatting terms of the selected package, and being able to fully control our production timescales.

OUR SERVICES

To ensure we make the client experience as easy and straight forward as possible, Rehiko have a range of supporting services it offers in and around our e-POD solutions, which include:

- Full Design and build
- Offsite testing facilities (Up to Level 4)
- Sub or main contractor role
- Delivery off-load and positioning of all equipment
- Full end-to-end installation
- Commissioning (Up to Level 3)
- Site acceptance testing
- On-going package maintenance

Rehiko are proud to offer a true one stop shop plug and play powertrain package. From concept, through to installation and commissioning, all are completed in-house utilising our own teams. Our service can also extend to taking on the role of principal contractor if required.

What makes our e-POD's *different?*



One of the only OEMs offering a true end-to-end, plug and play package



External package offers maximum room savings for white space



Greatly reduced lead times & on-site validation



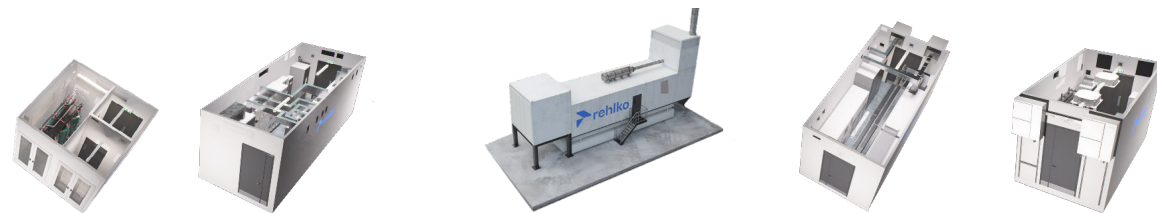
Flexibility of design, either fully bespoke or using our base design

Introducing *BaseCore*.

The Rehlko foundation for AI-ready modular power design

BaseCore is the new blueprint for Data Centre power infrastructure, purpose-built to help Developers design & scale faster, smarter, and with total confidence. Acting as a foundation for Rehlko's e-POD modular power infrastructure design, BaseCore brings together five fully engineered modules across power generation, switchgear, distribution, battery storage and UPS protection.

Each BaseCore module arrives fully pre-configured; ready to seamlessly integrate, dramatically reducing design time while enhancing reliability, resilience, and white-space efficiency. No matter the size of your Data Centre campus, our BaseCore design will help you streamline your entire construction process, from initial design to commissioning, giving you the power architecture you need, without the delays.



2.3MW e-POD	MVModule 2.3 MW	SwitchModule 4000A	GenModule KD2800/T2800 – 2240kW	ShieldModule 2000kW	StoreModule 175kWh (3 to 5 min)
2.8MW e-POD	MVModule 2.8 MW	SwitchModule 5000A	GenModule KD3500– 2800kW	ShieldModule 2500kW	StoreModule 333kWh (6 to 10 min)
3.6MW e-POD	MVModule 3.6 MW	SwitchModule 6300A	GenModule KD4000– 3200kW	ShieldModule 3000kW	StoreModule 400kWh (8 to 12min)



Why use a *BaseCore* design?



One of the only OEMs offering a true end-to-end, plug and play package



Fully configurable modular designs, tailored to site requirements



Rehlko manufacturing and component control ensures consistent quality, simplified logistics, and reduced risk



Full in-house fit-out, integration, testing and commissioning vastly cuts lead times



Consistent, engineered modular design foundation that accelerates decision-making for DC projects, and is easier to scale

SwitchModule

Our SwitchModule is a high-performance low-voltage switchgear solution designed for safe, efficient power distribution, available in 4000, 5000 and 6300A ratings. Developed at our divisional headquarters in Cholet, France, the SwitchModule delivers operational flexibility with both fixed and withdrawable versions, and a compact, multi-access layout. The system incorporates advanced cooling, built-in fire protection and a wide range of configuration options, making it suitable for demanding industrial and commercial environments.

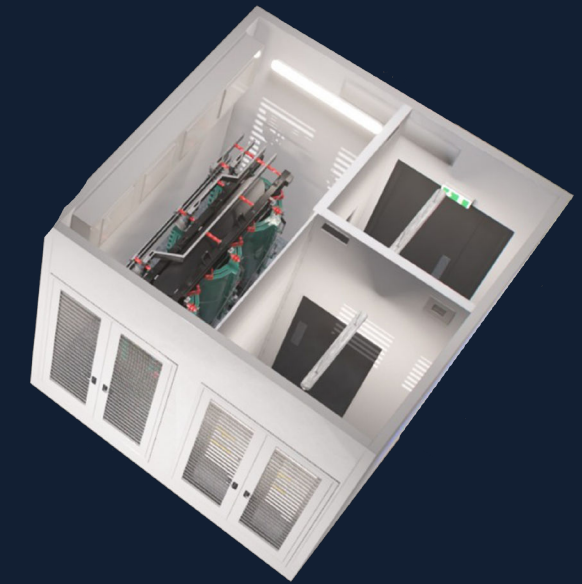
- High-performance LV switchgear (4000/5000/6300 A)
- Fixed and withdrawable options
- Compact, multi-access design
- Integrated fire protection and advanced cooling
- Developed by Rehlko in Cholet, France



MVModule

Available in 2.3, 2.8 and 3.6 MW capacities, the MVModule combines medium-voltage distribution, an RMU and a step-down transformer into a single, compact module. This fully integrated design ensures a smooth, dependable transition from MV feeds to the low-voltage systems that power your Data Centres critical equipment, simplifying installation while improving reliability and operational efficiency.

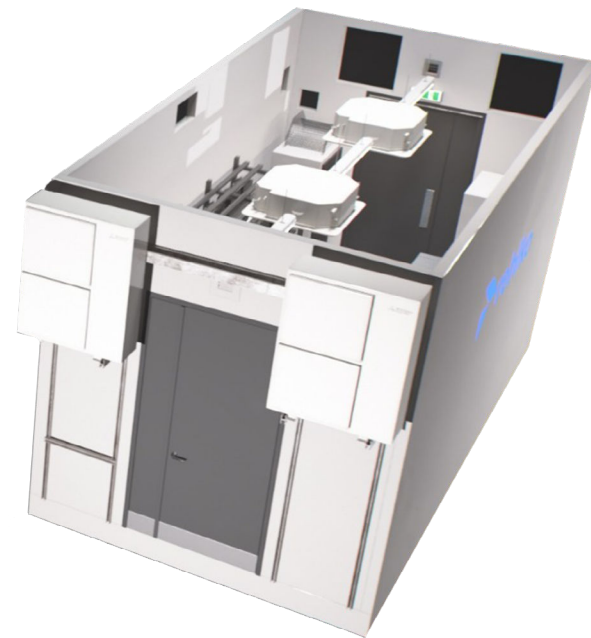
- Integrated MV distribution, RMU and transformer
- Available in 2.3, 2.8 and 3.6 MW ratings
- Reliable transition from MV supply to LV systems
- Compact, fully integrated module for simplified deployment



StoreModule

Advanced battery storage, available in 175, 333 and 400 kWh capacities, utilising TPPL technology to deliver long service life, rapid recharge performance and enhanced operational safety with zero thermal-runaway risk. Designed specifically for Data Centres, this energy solution provides a stable and dependable buffer that strengthens UPS performance, smooths load transitions and supports overall site resilience during power disturbances or high-demand cycles.

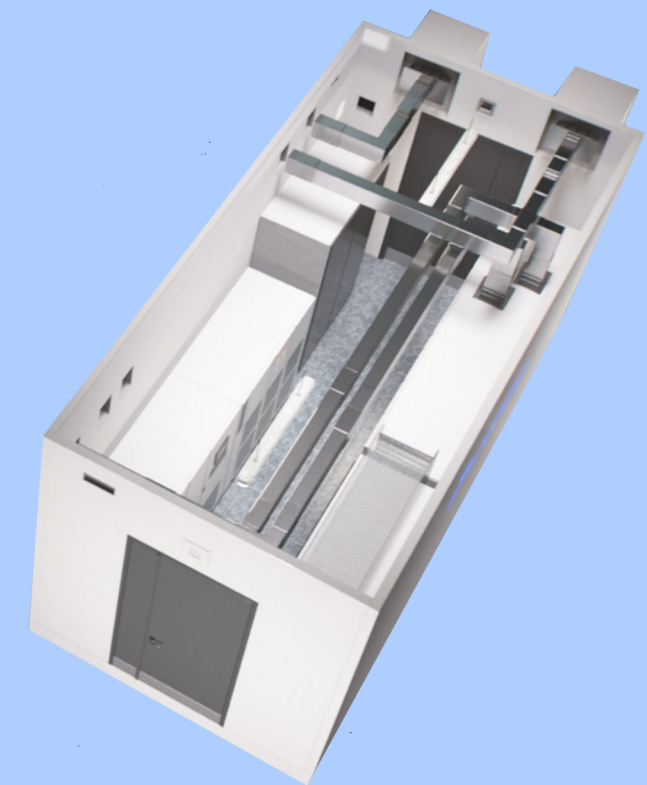
- TPPL battery technology with long life and rapid recharge
- Available in 175, 333 and 400 kWh capacities
- No thermal-runaway risk for enhanced safety
- Stabilises UPS performance and smooths load transitions
- Supports resilience during outages and peak demand



ShieldModule

Uninterruptible power protection engineered for high-density, AI-intensive Data Centre workloads. Available in 2000, 2500 and 3000 kW ratings, our UPS systems delivers exceptional efficiency through hot-swappable modules and a resilient distributed architecture that keeps critical operations online, reduces maintenance downtime and maximises overall uptime.

- Designed for high-density, AI-driven Data Centre workloads
- Available in 2000, 2500 and 3000 kW ratings
- Hot-swappable modules for uninterrupted maintenance
- Distributed architecture for maximum uptime and resilience
- High efficiency to reduce energy consumption and operating costs

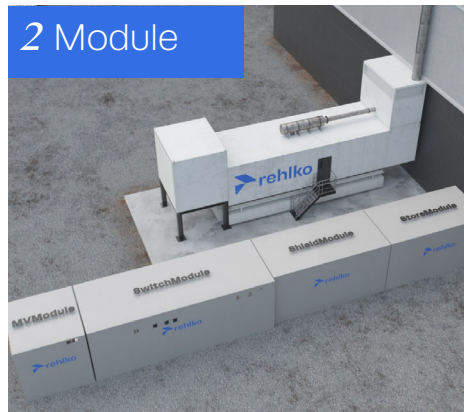


BaseCore Configurations

Our BaseCore modular power solutions are based on five pre-engineered modules that can be combined to create a wide range of critical power design configurations. Infrastructure can be delivered at ground level, stacked, or integrated into a two-story gantry access system, depending on site constraints and specification requirements. This approach ensures flexibility, scalability, and consistent performance across all installations.



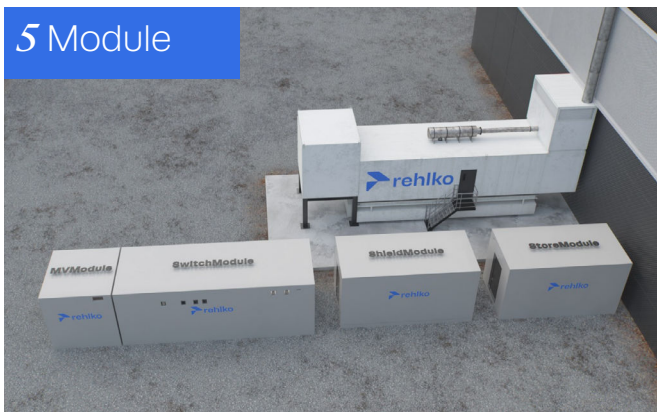
One Module Solution
Standalone GenModule providing on-site standby power generation.



Two Module Solution
All four BaseCore modules combined into one integrated enclosure, paired with GenModule



Three Module Solution
The same four modules distributed across two extended enclosures. Paired with GenModule.



Five Module Solution
Four modules separated across three dedicated enclosures, combining MV and SwitchModule. Paired with GenModule.



Five Module Solution
Four modules separated across three dedicated enclosures, combining SwitchModule and ShieldModule. Paired with GenModule.



Ready to Scale with Confidence?
Let's Talk

Scan our
QR Code

